

생활 맞춤 솔루션

**wells**  
Singapore



## Wells The One

Design a better, healthier life



**Wells The One** is the world's brand new water purifier system. It has cleverly divided the filtration device from the water dispensing faucet for a compact and premium design that has won several international awards.

### *Globally Recognised Design Awards*



iF Design Award



Red Dot Design Award



International Design Excellence Award



Good Design Award

## Available Colours

---



Red



Dark Brown



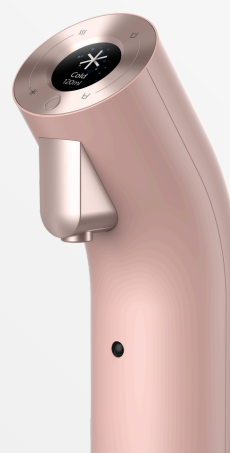
White



Pink

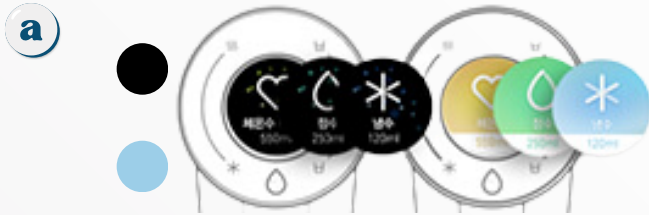


Mint

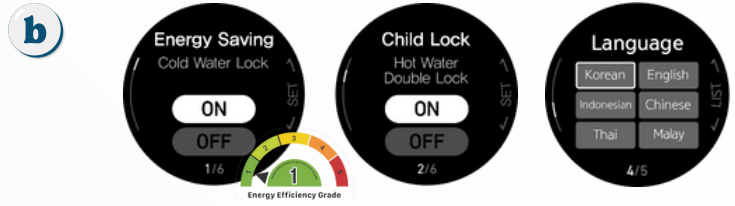


# 4 cm Full Colour LCD Screen

Choose between a light or dark screen display and select system settings.



Two colour options available based on your preference



Energy saving, Child lock, Language and others based on your preference

# Easy-to-use Wheel Touch

Control everything from 6 water temperatures to 4 volume settings from the tip of your fingers.



## 4-level Hot Water Options



### Body Temperature

36.5°C to help with metabolism, blood circulation and digestion



### Baby Milk

50°C to make baby formula



### Tea

70°C to brew stress-relieving tea



### Coffee

85°C to brew rich and delicious coffee

# Ultra Small



An all-new Ultra-small Premium design at just **8.8cm** in diameter.



## PIR (Passive Infrared Sensor)

Detects human and prepares purifier for water dispensing.

## Body Spin Function

Enables you to rotate the faucet 180° for easier water dispensing.



## Multi-tray

Adjust tray height easily to fit everything from small cups to large cooking containers.



## Smart Hygiene Care System

A perfect hygiene care system guarantees safe drinking water with automatic self-sterilisation, an H+ cartridge, and super bio water pipes.



### Water pipe sterilisation

Automatically sterilises all water pipes once every 3 days



### Super bio water pipes

No water forms on the surface of super bio-tubes for more hygienic maintenance



### Auto water dispensing

Drains remaining water from all water pipes when not in use for 24 hours



### H+ cartridge

Anti-bacterial properties of the H+ cartridge keep everything extra clean

# 9 - step Comprehensive Nanofiltration

Wells water filter technology maintains the minerals and filters out harmful substances such as **Heavy Metals** and **Norovirus**.

## 1st Filter

### Wells Multi-Carbon Plus Filter

#### 5 - step Filtering System

Removes 4 types of heavy metals

- Step 1:** Removes suspended solids and residual rust
- Step 2:** Removes residual chlorine, and bad odours
- Step 3:** Removes heavy metals
- Step 4:** Prevents the buildup of bacteria
- Step 5:** Maintains pH level



NSF Certified

## 2nd Filter

### Neo Nano Clean Filter

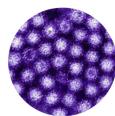
#### 4 - step Filtering System

Removes norovirus and dispenses clean water with natural minerals

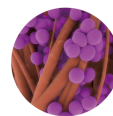
- Step 6:** Removes suspended solids and residual rust
- Step 7:** Removes norovirus and bacteria
- Step 8:** Removes micro particles, foul odours, and bacteria
- Step 9:** Improve water taste, and maintain minerals



*Colon Bacillus*



*Norovirus*



*Staphylococcus aureus*



## Filter-change Indicator

Each set of filter is able to cleanse about 3650L of water. Once the quality of the filter starts deteriorating, the filter change indicator will be prompted on the screen.

# Innovative, hassle-free installation

*Install anywhere you want and keep  
your kitchen spacious and free.*

## STEP 1

Select a drilling point



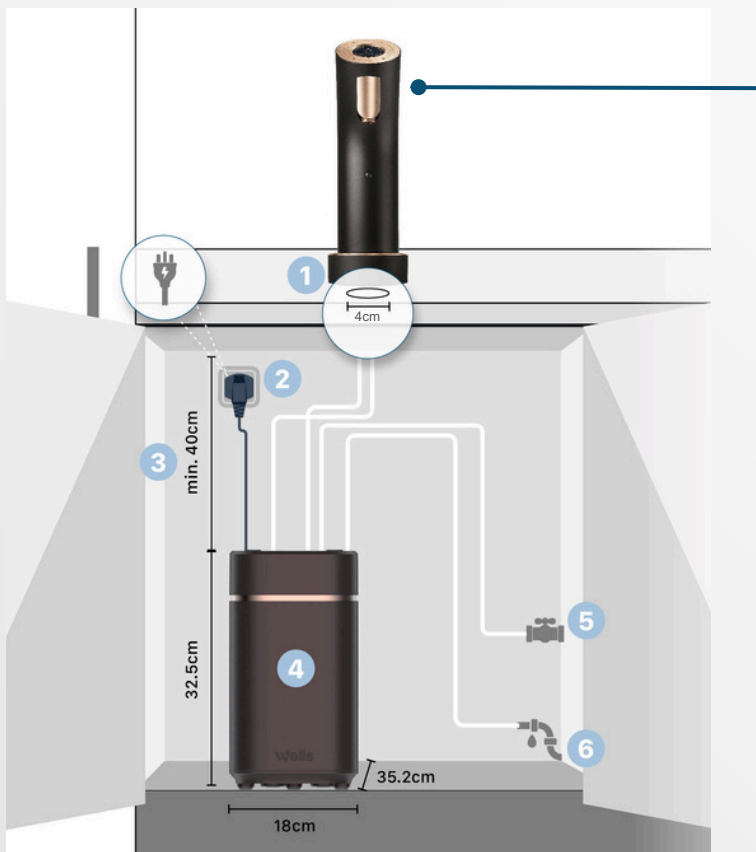
## STEP 2

Drill a 4cm hole in the kitchen  
countertop



## STEP 3

Install the water purifier



## Provision of Installation

- 1 Countertop drilling hole 4cm (diameter)
- 2 13A power socket below counter: above 32.5cm
- 3 Space allowance from top of counter to filtration unit: **40cm** (not further than 80cm)
- 4 Cabinet space requirement to filtration unit: **28cm(W) x 45cm(D) x 45cm(H)**
- 5 Water inlet (supply)
- 6 Water outlet (drainage) Maximum height: 30cm(H) from base

# Product Specification



Basic Specifications	
<b>Product</b>	Wells The One Water Purifier (Cold/Hot/Ambient Water)
<b>Model</b>	WR974
<b>Function</b>	Cold/Hot/Ambient Water
<b>Dispensing Method</b>	Direct-dispenser type
<b>Faucet Size (WxDxH)</b>	88mm x 88mm x 337mm
<b>Faucet Weight</b>	1.15kg
<b>Server Body Weight</b>	8kg
Performance Functions	
<b>Filter</b>	Wells Multi Carbon Plus-Nano Clean Filter (9-step filtering)
<b>Hygiene / Sterilising System</b>	Auto antibacterial action / Auto drainage / H+ cartridge antibacterial effect / Super bio water pipes / All-stainless-dual cooling water pipe
<b>Others</b>	Activity recognition with Passive Infrared Sensor / 180° body spin / Wheel touch display / Various installation options available
Energy Usage	
<b>Power Consumption</b>	Cooler 0.85A, Heater 2800W
<b>Energy Efficiency</b>	1st grade (Heater)
<b>Power Supply</b>	220 V~, 60 Hz